

MONTHLY MEMBERSHIP PROGRESS REPORT

District 23 C

Results as of: 12/31/2023

GMT:

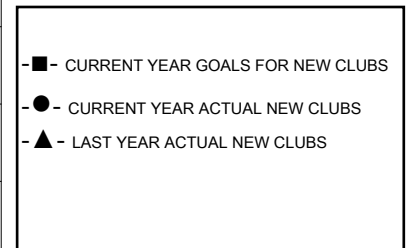
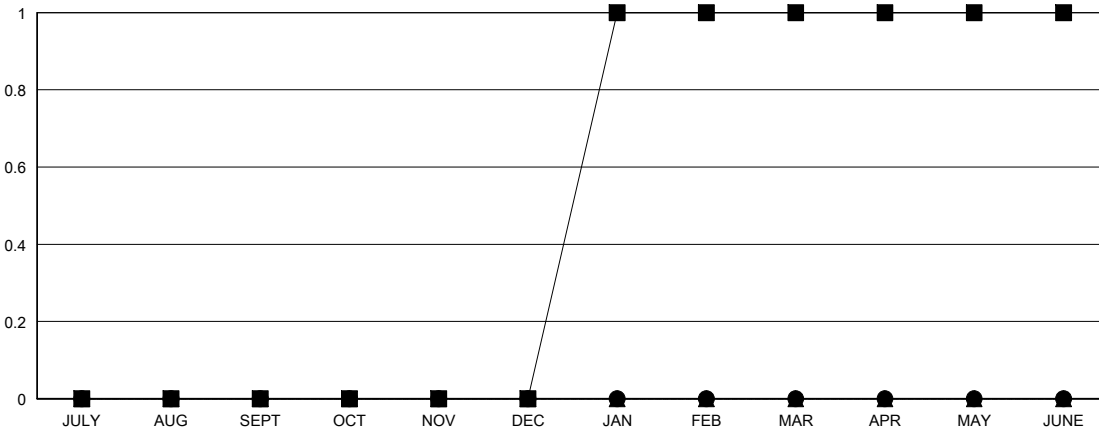
LOCATION CONNECTICUT

GMT CA

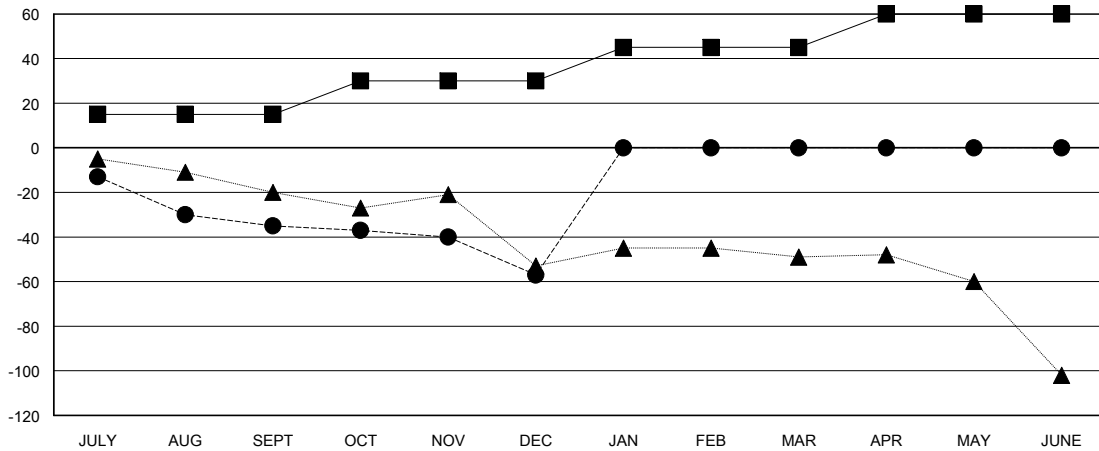
Clubs			
RESULTS FOR 2023-2024			
QUARTER	NEW CLUB GOAL	NEW CLUBS	DROPPED CLUBS
JULY/AUG/SEPT	0	0	1
OCT/NOV/DEC	0	0	0
JAN/FEB/MAR	1	0	0
APR/MAY/JUNE	0	0	0

Members			
RESULTS FOR 2023-2024			
QUARTER	MEMBER GROWTH NET GOAL	MEMBER GROWTH ACTUAL	DROPPED MEMBERS ACTUAL (including transfers)
JULY/AUG/SEPT	15	16	50
OCT/NOV/DEC	15	32	51
JAN/FEB/MAR	15	0	0
APR/MAY/JUNE	15	0	0

GOALS AND ACTUAL NEW CLUBS CUMULATIVE



GOALS AND ACTUAL MEMBERS CUMULATIVE



DROPPED CLUBS: 1	23 CLUBS OF 55 ADDED 1 OR MORE NEW MEMBERS	<u>GENDER DISTRIBUTION</u>	
		MALE	864 (58.74%)
		FEMALE	607 (41.26%)
<u>DROPPED MEMBERS</u>		TOTAL FAMILY UNIT MEMBERS 325	
DECEASED	13	FAMILY MEMBERS PAYING HALF DUES 169	
CLUB CANCELLED	4		
OTHER	84		
TOTAL	101		

[CLICK HERE FOR CUMULATIVE MEMBERSHIP DATA](#)